



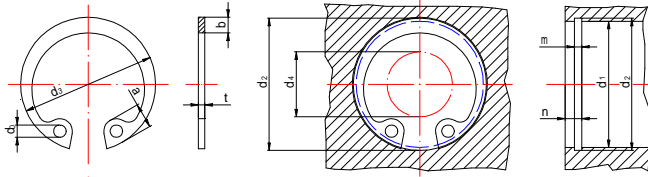
Retaining Rings (Internal)

JIS B 2804

(JAPANESE INDUSTRIAL STANDARD)

Groove Dimension

R-PACK



Above Size NO.170

The dimension d4 is the minimum diameter of inner periphery when the retaining ring is set in the hole.
d4: CLEARANCE DIAMETER

RTW-rings can be supplied in tape wrapped or banded.
Size No. 10 through 48 tape wrapped.
Size No. 50 through 125 tape wrapped or banded.



Unit: mm

Size-No.	Ring dimension							Ref. d4	Groove dimension					
	d3		t		b	a	d0		d1	d2		m	Ref.n.	
	Max.	Min.	Max.	Min.	Approx.	Approx.	Min.			Max.	Min.	Max.	Min.	Min.
RTW- 6	6.88	6.52	0.43	0.37	0.7	1.6	0.8	2.5	6	6.29	6.25	0.6	0.5	0.5
7	7.88	7.52	0.43	0.37	0.8	1.7	0.8	3	7	7.36	7.3	0.6	0.5	0.5
8	8.98	8.62	0.43	0.37	0.9	1.7	0.8	3.5	8	8.46	8.4	0.6	0.5	0.6
9	9.98	9.62	0.64	0.56	1.1	2.2	0.8	4	9	9.46	9.4	0.8	0.7	0.6
10	10.88	10.52	1.05	0.95	1.5	2.8	1.2	3	10	10.51	10.4	1.29	1.15	1.5
11	11.98	11.62	1.05	0.95	1.5	3	1.2	4	11	11.51	11.4	1.29	1.15	1.5
12	13.18	12.82	1.05	0.95	1.7	3.1	1.5	5	12	12.61	12.5	1.29	1.15	1.5
13	14.28	13.92	1.05	0.95	1.7	3.1	1.5	6	13	13.71	13.6	1.29	1.15	1.5
14	15.28	14.92	1.05	0.95	1.9	3.6	1.7	7	14	14.71	14.6	1.29	1.15	1.5
15	16.38	16.02	1.05	0.95	1.9	3.6	1.7	8	15	15.81	15.7	1.29	1.15	1.5
16	17.48	17.12	1.05	0.95	1.9	3.7	1.7	8	16	16.91	16.8	1.29	1.15	1.5
17	18.5	18.1	1.05	0.95	1.9	3.8	1.7	9	17	17.91	17.8	1.29	1.15	1.5
18	19.7	19.3	1.05	0.95	2.4	4	1.7	10	18	19.21	19	1.29	1.15	1.5
19	20.7	20.3	1.05	0.95	2.5	4	2	11	19	20.21	20	1.29	1.15	1.5
20	21.7	21.3	1.05	0.95	2.5	4	2	12	20	21.21	21	1.29	1.15	1.5
21	22.7	22.3	1.05	0.95	2.5	4.1	2	12	21	22.21	22	1.29	1.15	1.5
22	23.7	23.3	1.05	0.95	2.5	4.1	2	13	22	23.21	23	1.29	1.15	1.5
24	26.1	25.7	1.26	1.14	2.5	4.3	2	15	24	25.41	25.2	1.49	1.35	1.5
25	27.1	26.7	1.26	1.14	3	4.4	2	16	25	26.41	26.2	1.49	1.35	1.5
26	28.1	27.7	1.26	1.14	3	4.6	2	16	26	27.41	27.2	1.49	1.35	1.5
28	30.35	29.85	1.26	1.14	3	4.6	2	18	28	29.61	29.4	1.49	1.35	1.5
30	32.35	31.85	1.26	1.14	3	4.7	2	20	30	31.65	31.4	1.49	1.35	1.5
32	34.65	34.15	1.26	1.14	3.5	5.2	2.5	21	32	33.95	33.7	1.49	1.35	1.5
34	36.75	36.25	1.56	1.44	3.5	5.2	2.5	23	34	35.95	35.7	1.79	1.65	2
35	38.05	37.55	1.56	1.44	3.5	5.2	2.5	24	35	37.25	37	1.79	1.65	2
36	39.05	38.55	1.56	1.44	3.5	5.2	2.5	25	36	38.25	38	1.79	1.65	2
37	40.05	39.55	1.56	1.44	3.5	5.2	2.5	26	37	39.25	39	1.79	1.65	2
38	41.05	40.55	1.56	1.44	4	5.3	2.5	27	38	40.25	40	1.79	1.65	2
39	42.4	41.6	1.82	1.68	4	5.4	2.5	27	39	41.45	41.2	2.04	1.9	2
40	43.9	43.1	1.82	1.68	4	5.7	2.5	28	40	42.75	42.5	2.04	1.9	2
42	45.9	45.1	1.82	1.68	4	5.8	2.5	30	42	44.75	44.5	2.04	1.9	2
45	48.9	48.1	1.82	1.68	4.5	5.9	2.5	33	45	47.75	47.5	2.04	1.9	2
46	50.15	49.25	1.82	1.68	5	5.7	2.5	33	46	48.75	48.5	2.04	1.9	2
47	50.95	50.05	1.82	1.68	4.5	6.1	2.5	34	47	49.75	49.5	2.04	1.9	2
48	51.95	51.05	1.82	1.68	4.5	6.2	2.5	35	48	50.8	50.5	2.04	1.9	2
50	54.65	53.75	2.07	1.93	4.5	6.5	2.5	37	50	53.3	53	2.34	2.2	2
52	56.65	55.75	2.07	1.93	5.1	6.5	2.5	39	52	55.3	55	2.34	2.2	2
55	59.65	58.75	2.07	1.93	5.1	6.5	2.5	41	55	58.3	58	2.34	2.2	2
56	60.65	59.75	2.07	1.93	5.1	6.6	2.5	42	56	59.3	59	2.34	2.2	2
58	62.65	61.75	2.07	1.93	5.1	6.8	2.5	44	58	61.3	61	2.34	2.2	2
60	64.65	63.75	2.07	1.93	5.5	6.8	2.5	46	60	63.3	63	2.34	2.2	2
62	66.65	65.75	2.07	1.93	5.5	6.9	2.5	48	62	65.3	65	2.34	2.2	2
63	67.65	66.75	2.07	1.93	5.5	6.9	2.5	49	63	66.3	66	2.34	2.2	2

ALL RIGHTS RESERVED



Size-No.	Ring dimension							Ref. d4	Groove dimension					
	d3		t		b	a	d0		d1	d2		m		Ref.n.
	Max.	Min.	Max.	Min.	Approx	Approx	Min.			Max.	Min.	Max.	Min.	Min.
RTW- 65	69.65	68.75	2.58	2.42	5.5	7	2.5	50	65	68.3	68	2.84	2.7	2.5
68	72.95	72.05	2.58	2.42	6	7.4	2.5	53	68	71.3	71	2.84	2.7	2.5
70	74.95	74.05	2.58	2.42	6	7.4	2.5	55	70	73.3	73	2.84	2.7	2.5
72	76.95	76.05	2.58	2.42	6.6	7.4	2.5	57	72	75.3	75	2.84	2.7	2.5
75	79.95	79.05	2.58	2.42	6.6	7.8	2.5	60	75	78.3	78	2.84	2.7	2.5
78	83.05	81.95	2.58	2.42	6.6	8	2.5	62	78	81.35	81	2.84	2.7	2.5
80	86.05	84.95	2.58	2.42	7	8	2.5	64	80	83.85	83.5	2.84	2.7	2.5
82	88.05	86.95	2.58	2.42	7	8	3	66	82	85.85	85.5	2.84	2.7	2.5
85	91.05	89.95	3.09	2.91	7	8	3	69	85	88.85	88.5	3.38	3.2	3
88	94.05	92.95	3.09	2.91	7.6	8.2	3	71	88	91.85	91.5	3.38	3.2	3
90	96.05	94.95	3.09	2.91	7.6	8.3	3	73	90	93.85	93.5	3.38	3.2	3
92	98.05	96.95	3.09	2.91	8	8.3	3	74	92	95.85	95.5	3.38	3.2	3
95	101.05	99.95	3.09	2.91	8	8.5	3	77	95	98.85	98.5	3.38	3.2	3
98	104.05	102.95	3.09	2.91	8.3	8.7	3	80	98	101.85	101.5	3.38	3.2	3
100	106.05	104.95	3.09	2.91	8.3	8.8	3	82	100	103.85	103.5	3.38	3.2	3
102	108.55	107.45	4.09	3.91	8.9	9	3	83	102	106.54	106	4.38	4.2	4
105	112.55	111.45	4.09	3.91	8.9	9.1	3	86	105	109.54	109	4.38	4.2	4
108	115.55	114.45	4.09	3.91	8.9	9.5	3	87	108	112.54	112	4.38	4.2	4
110	117.55	116.45	4.09	3.91	8.9	10.2	3	89	110	114.54	114	4.38	4.2	4
112	119.55	118.45	4.09	3.91	8.9	10.2	3	90	112	116.54	116	4.38	4.2	4
115	122.65	121.35	4.09	3.91	9.5	10.2	3	94	115	119.54	119	4.38	4.2	4
120	127.65	126.35	4.09	3.91	9.5	10.7	3	98	120	124.63	124	4.38	4.2	4
125	132.65	131.35	4.09	3.91	10	10.7	3.5	103	125	129.63	129	4.38	4.2	4
130	138.26	136.37	4.09	3.91	10	10.7	3.5	108	130	134.63	134	4.4	4.2	6
135	143.26	141.37	4.09	3.91	10.8	11	3.5	113	135	139.63	139	4.4	4.2	6
140	148.26	146.37	4.09	3.91	10.8	11	3.5	118	140	144.63	144	4.4	4.2	6
145	153.26	151.37	4.09	3.91	10.8	11	3.5	123	145	149.63	149	4.4	4.2	6
150	159.26	157.37	4.09	3.91	11.5	11.8	3.5	126	150	155.63	155	4.4	4.2	7.5
155	165.26	163.37	4.09	3.91	11.5	11.8	3.5	130	155	160.63	160	4.4	4.2	7.5
160	170.26	168.37	4.09	3.91	12	12.5	3.5	134	160	165.63	165	4.4	4.2	7.5
165	175.76	173.87	4.09	3.91	12	12.7	3.5	139	165	170.63	170	4.4	4.2	7.5
170	180.76	178.87	4.09	3.91	12	-	3.5	145	170	175.63	175	4.4	4.2	7.5
175	185.94	183.78	4.09	3.91	12.5	-	3.5	149	175	180.63	180	4.4	4.2	7.5
180	190.94	188.78	4.09	3.91	13	-	4	153	180	185.72	185	4.4	4.2	7.5
185	195.94	193.78	4.09	3.91	13.5	-	4	157	185	190.72	190	4.4	4.2	7.5
190	200.94	198.78	4.09	3.91	13.5	-	4	162	190	195.72	195	4.4	4.2	7.5
195	205.94	203.78	4.09	3.91	13.5	-	4	167	195	200.72	200	4.4	4.2	7.5
200	210.94	208.78	4.09	3.91	14	-	4	171	200	205.72	205	4.4	4.2	7.5
210	223.44	221.28	5.15	4.85	14	-	4	181	210	216.72	216	5.45	5.2	9
220	233.44	231.28	5.15	4.85	14	-	4	191	220	226.72	226	5.45	5.2	9
230	243.44	241.28	5.15	4.85	14	-	4	201	230	236.72	236	5.45	5.2	9
240	253.62	251.19	5.15	4.85	14	-	4	211	240	246.72	246	5.45	5.2	9
250	263.62	261.19	5.15	4.85	14	-	4	221	250	256.81	256	5.45	5.2	9
260	276.62	274.19	5.15	4.85	16	-	4	227	260	268.81	268	5.45	5.2	12
270	286.62	284.19	5.15	4.85	16	-	4	237	270	278.81	278	5.45	5.2	12
280	296.62	294.19	5.15	4.85	16	-	4	247	280	288.81	288	5.45	5.2	12
290	306.62	304.19	5.15	4.85	16	-	4	257	290	298.81	298	5.45	5.2	12
300	316.62	314.19	5.15	4.85	16	-	4	267	300	308.81	308	5.45	5.2	12

Material=Carbon spring steel. Hardness=HRC44~52, Finish=Black phosphate coating (ACP), Zn plating, Chromate dip.

Material=Stainless spring steel

Note: mark and size No.130 above are according to our company's specification.
mark is old JIS.

ALL RIGHTS RESERVED

DONGGUAN EAGLE SANKYOU SCREWS AND FASTENERS CO.,LTD.