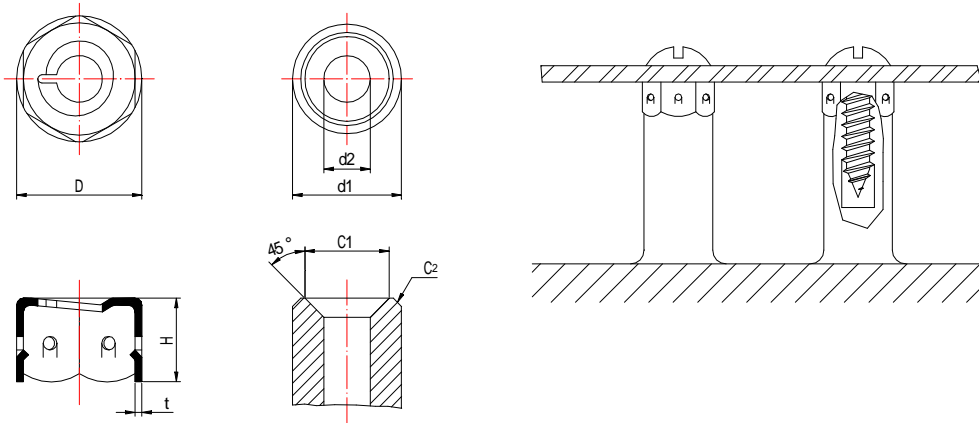




Top Nuts

Applicable stud

Installed



Unit: mm

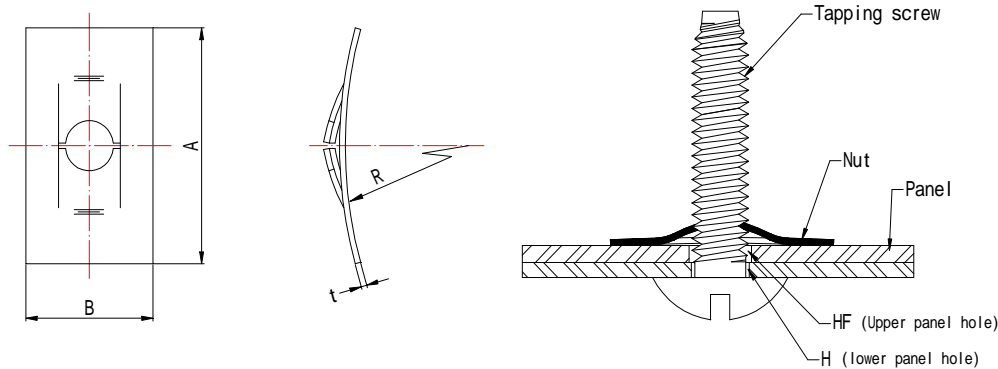
Size-No.	Nut			Applicable screw see note 1			Applicable stud				
	D	H	t	Tapping screw Type 1	Tapping screw Type 2,4	Tapping screw Type 3	d1	d2	C1 (Min.)	C2 (Min.)	
O S	-3001	7.3	6.2	0.4	M 3 -24	M 3 -24	—	6.3 ~6.4	2.55~2.65	4.6	0.8
	4001	9.2	6.1	0.5	M 4 -16	M 4 -18	—	7.85~8	3.4 ~3.5	6.4	0.6
	4002	10.7	6.3	0.5	M 4 -16	M 4 -18	—	9.45~9.6	3.4 ~3.5	7.4	0.8
	4003	10.7	5.8	0.5	—	—	M 4 X 0.7	9.45~9.6	3.4 ~3.5	7.4	0.8
	5001	10.7	5.8	0.5	M 5 - 12	M 5 - 16	—	9.45~9.6	4.5 ~4.6	7.4	0.8

Material= Carbon spring steel. Hardness=40~50. Finish=Zn plating, Chromate dip.

Note: 1.Applicable screw must be used tapping screw JIS B 1115.

2.Applicable stud material =High impact polystyrene (HIPS), Polycarbonate (PC), ABS, PolycetaI (POM)

F-Type Plate Nuts (Screw-type)



Unit: mm

Size-No.	Applicable screw See note 1	Nut dimension				Panel size		
		A	B	R	t	H	HF	
F S N	-3001	M 3 X 0.5	16	10	40	0.3	3.2	4
	4001	M 4 X 0.7	20	13	50	0.4	4.3	5
	5001	M 5 X 0.8	20	13	50	0.45	5.3	6
	6001	M 6 X 1.0	20	13	50	0.5	6.4	7

Material=Carbon spring steel. Hardness HRC 40~50. Finish=Zn plating, Chromate dip.

Note: 1. Applicable screw must be used tapping screw JIS B 1115.

2.Enquire special type of nut when you need other size or type.

ALL RIGHTS RESERVED

DONGGUAN EAGLE SANKYOU SCREWS AND FASTENERS CO.,LTD.