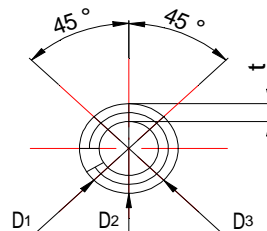
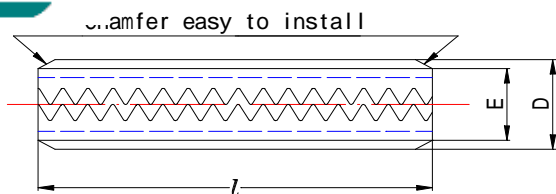




Spring Pins (Light duty)



Unit: mm

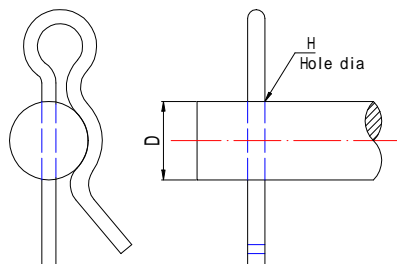
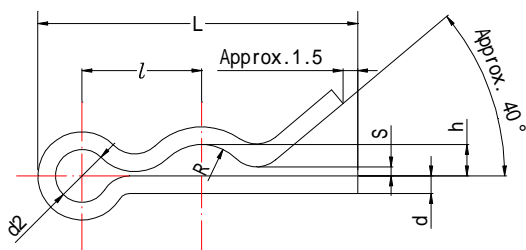
Nominal dia.		1.6	2	2.5	3	4
D(1)	Max.	1.8	2.25	2.75	3.25	4.4
	Min.	1.7	2.15	2.65	3.15	4.2
t		0.15	0.2	0.25	0.3	0.4
E (Max.)		1.5	1.9	2.4	2.9	3.9
Double shear strength	kgf	95	158	247	356	629
	(KN)	(0.93)	(1.55)	(2.42)	(3.49)	(6.16)
Hole size	Max.	1.68	2.09	2.59	3.09	4.12
	Min.	1.6	2	2.5	3	4
Length L	4.5	4				
	5.5	5				
	5.5	6				
	8.5	8				
	10.5	10				
	13	12				
	15	14				
	17	16				
	19	18				
	21	20				
	23	22				
	26	25				
	29	28				
	33	32				
	37	36				
	41	40				

Material=Stainless spring steel.

Note: Max. D shall be checked by a "Go" ring gage. Min. D shall be the average of the D1, D2, and D3 diameter.

For ordering please write nominal dia and length as well. Example: "NP 2.5X16"

Snap Pins



Unit: mm

Size-No.	Snap Pin								Applicable shaft		
	d		d2	l	R	h	S	L	D	H	
	Max.	Min.	Approx.	Approx.	Approx.	Approx.	Max.	Approx.	Ref.	Ref.	
SSP	-4	1.02	0.98	3	6	2	1	0.5	16.3	4	1.2
	5	1.02	0.98	3	6.5	2.5	1.5	0.5	17.9	5	1.2
	6	1.23	1.17	3.6	7.8	3	1.8	0.6	21.2	6	1.5
	8	1.63	1.57	4.8	10.4	4	2.4	0.8	27.7	8	1.9
	10	1.83	1.77	5.4	12.2	5	3.2	0.9	32.6	10	2.2
	12	1.83	1.77	5.4	13.2	6	4.2	0.9	35.8	12	2.2
	14	2.03	1.97	6	15	7	5	1	40.6	14	2.4
16	2.03	1.97	6	16	8	6	1	43.8	16	2.4	

Material=SWB or SW RH 57~82 (Hardness = HRC 40~50). Finish = Zn plating, Chromate dip.

ALL RIGHTS RESERVED