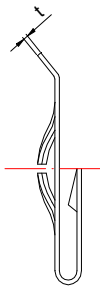
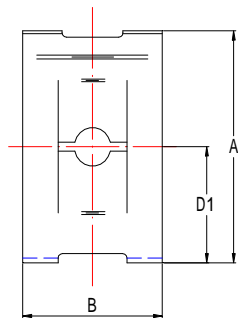
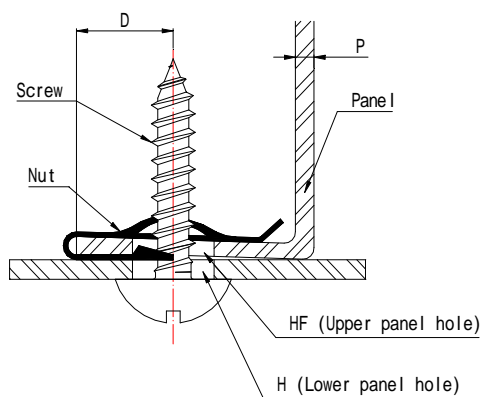




J-Type Plate Nuts (Screw type)



Installed



Unit: mm

Size-No.	Applicable screw See note 1	Nut dimension				Applicable stud					Hardness (HRC)
		A	B	D1	t	P		D	H	HF	
						Min.	Max.				
JSN -3001	M 3 X0.5	18	11.2	9	0.3	0.6	1	7.5	4	5.5	
4001	M 4 X0.7	20	12.7	10	0.4	0.7	1.2	8	5	7	
4003	M 4 -18	20	12.7	10	0.6	0.8	1.2	8	5	7	39~47
5001	M 5 X0.8	20	12.7	10	0.45	0.7	1.2	8	6	8	
5004	M 5 -16	21.2	12.7	11.2	0.7	0.7	1.2	9	6	8	39~47
5003	M 5 -12	22	12.7	12	0.7	2.5	3	9	6	8	39~47
6001	M 6 X1	20	12.7	10	0.5	0.7	1.2	8	7.5	9.5	
6002	M 6 -14	20	12.7	10	0.7	0.7	0.8	8	7.5	9.5	39~47

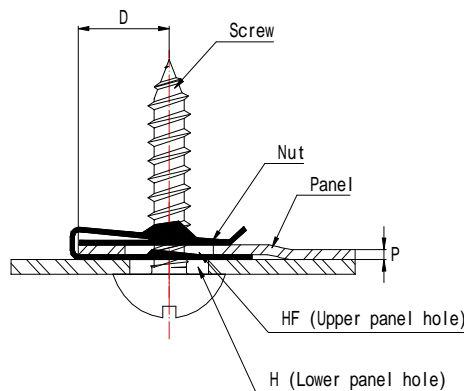
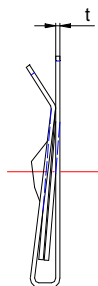
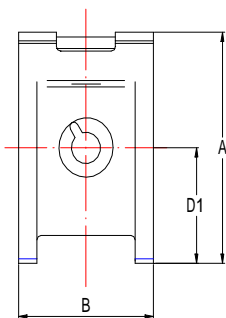
Material= Carbon spring steel. Hardness=40~50. Finish=Black plating coating(ACP).

Note: 1.Applicable screw must be used tapping screw JIS B 1115.

2.Enquire special types of nut when you need other size or type.

U-Type Wide Panel Nuts (Screw-type)

Installed



Unit: mm

Size-No.	Applicable screw See note 1	Nut dimension				Panel size					Remark	Hardness (HRC)
		A	B	D1	t	P		D	H	HF		
						Min.	Max.					
WUSN -4039	M 4 - 18	21.6	12.7	10.1	0.6	0.7	2.5	8	5	7		39~47
4044	M 4 - 18	16.6	13.5	8.6	0.6	0.6	2	7	5	6	Without float	
5022	M 5 - 16	21.7	12.7	10.2	0.7	0.7	2.5	8	6	8		39~47
5025	M 5 - 16	20.6	13.5	9.5	0.6	0.6	3.8	8	6	7	Without float	38~45
5029	M 5 - 16	21.7	12.7	10.2	0.7	2	3	8	6	7	Without float	39~47

Material=Carbon spring steel. Hardness HRC 40~50. Finish=Black phosphate coating(ACP).

Note: 1. Applicable screw must be used tapping screw JIS B 1115.

2. Enquire special type of nut when you need other size or type.

ALL RIGHTS RESERVED

DONGGUAN EAGLE SANKYOU SCREWS AND FASTENERS CO.,LTD.