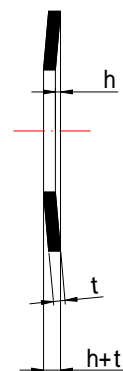
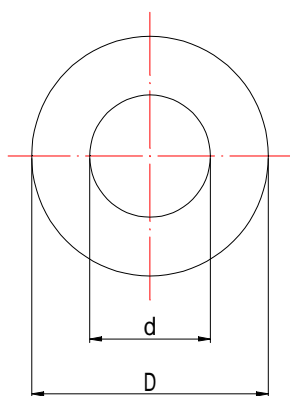




Dish Spring



Unit: mm

Size-No.	d		D		H (Heavy Duty)				L (Light Duty)			
	Max.	Min.	Max.	Min.	t		h	h+t	t		h	h+t
					Max.	Min.	Approx.	Approx.	Max.	Min.	Approx.	Approx.
DB- 4	4.5	4.1	8.3	7.7	0.44	0.36	0.2	0.6	0.33	0.27	0.25	0.55
5	5.5	5.1	10.3	9.7	0.54	0.46	0.25	0.75	0.44	0.36	0.3	0.7
6	6.5	6.1	12.8	12.2	0.75	0.65	0.3	1	0.54	0.46	0.35	0.85
7	7.5	7.1	14.3	13.7	0.85	0.75	0.3	1.1	0.54	0.46	0.4	0.9
8	8.5	8.1	16.3	15.7	0.96	0.84	0.35	1.25	0.65	0.55	0.45	1.05
9	9.5	9.1	18.3	17.7	1.06	0.94	0.4	1.4	0.75	0.65	0.5	1.2
10	10.6	10.1	20.4	19.6	1.06	0.94	0.45	1.45	0.85	0.75	0.55	1.35
11	11.6	11.1	22.9	22.1	1.27	1.13	0.5	1.7	0.85	0.75	0.65	1.45
12	12.6	12.1	25.4	24.6	1.57	1.43	0.55	2.05	0.96	0.84	0.7	1.6
14	14.6	14.1	28.4	27.6	1.57	1.43	0.65	2.15	1.06	0.94	0.8	1.8
16	16.8	16.1	32	31	1.83	1.67	0.7	2.45	1.27	1.13	0.9	2.1
18	18.8	18.1	36	35	2.08	1.92	0.8	2.8	1.27	1.13	1	2.2
20	20.9	20.2	40.5	39.5	2.08	1.92	0.9	2.9	1.57	1.43	1.15	2.65
22	22.9	22.2	45.5	44.5	2.6	2.4	1	3.5	1.83	1.67	1.3	3.05
25	25.9	25.2	50.5	49.5	3.12	2.88	1.1	4.1	2.08	1.92	1.4	3.4
28	29	28.3	56.5	55.5	3.12	2.88	1.3	4.3	2.08	1.92	1.6	3.6
30	31.6	30.6	63.6	62.4	3.62	3.38	1.4	4.9	2.6	2.4	1.75	4.25
35	36.6	35.6	71.6	70.4	4.12	3.88	1.6	5.6	2.6	2.4	2	4.5
40	41.6	40.6	80.6	79.4	5.15	4.85	1.7	6.7	3.12	2.88	2.3	5.3
45	46.6	45.6	91.6	90.4	5.15	4.85	2	7	3.62	3.38	2.5	6
50	51.7	50.3	100.7	99.3	6.15	5.85	2.2	8.2	3.62	3.38	2.8	6.3

Material=Carbon spring steel. Hardness=HRC40~50.

Finish=Black phosphate coating (ACP). Zn plating, Chromate dip.

ALL RIGHTS RESERVED

DONGGUAN EAGLE SANKYOU SCREWS AND FASTENERS CO.,LTD.