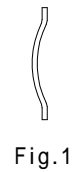
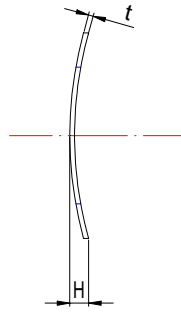
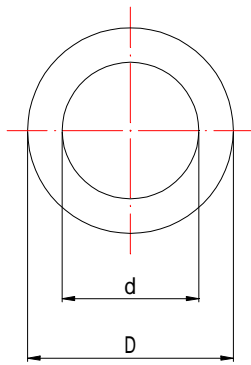




## Curved Washer



Unit: mm

Size-No.	d		D		H		t	Remarks		
	Max.	Min.	Max.	Min.	Max.	Min.		Design Variation	Material	Hardness (HRC)
M B -1711	1.9	1.6	3.9	3.5	0.8	0.4	0.1		C5210P	_____
3212	3.4	3.1	6.7	6.3	1.2	0.8	0.15		SUS	31(Min.)
4001	4.3	4.0	10.2	9.8	1.5	1.1	0.2			43~51
4201	4.4	4.1	10.2	9.8	1.4	1.0	0.25			
4301	4.5	4.2	7.0	6.6	1.2	0.8	0.15			
4302	4.5	4.2	8.2	7.8	1.4	1.0	0.3			
5011	5.2	4.8	8.1	7.7	1.4	1.0	0.15			
5211	5.4	5.0	10.2	9.8	1.4	1.0	0.1		C5191P	_____
5301	5.5	5.1	10.2	9.8	1.6	1.2	0.3			
6201	6.4	6.0	11.2	10.8	1.4	1.0	0.2			43~51
6203	6.4	6.0	11.2	10.8	1.6	1.2	0.15			
6301	6.5	6.1	11.2	10.8	1.7	1.3	0.4			
6411	6.6	6.2	24.3	23.7	2.7	2.3	0.4		SUS	42~52
6511	6.7	6.3	10.0	9.6	1.4	1.0	0.5		SUS	31(Min.)
6811	7.0	6.6	10.8	10.4	2.0	1.6	0.15			
8302	8.7	8.3	15.3	14.7	2.6	2.0	0.5			
8501	8.7	8.3	16.3	15.7	3.3	2.7	0.4			
12511	12.8	12.2	17.1	16.5	2.5	1.9	0.4			
14501	14.8	14.2	20.3	19.7	3.3	2.7	0.3			
15900	16.2	15.6	20.3	19.7	1.6	1.0	0.25			37~43
16601	16.9	16.3	25.3	24.7	2.3	1.7	0.3	Fig. 1		38~45

Material=Carbon spring steel. Hardness=HRC40~50. Finish=Black phosphate coating (ACP).

ALL RIGHTS RESERVED

DONGGUAN EAGLE SANKYOU SCREWS AND FASTENERS CO.,LTD.